

BALI

COLLECTION



Downtown Doral



Artist's conception and for the convenience of reference. All dimensions are approximate. The developer reserves the right to change and alter materials, specifications, features, dimensions and designs without notice. Oral representations cannot be relied upon as correctly stating the representations of the developer. For correct representations, reference should be made to documents required by section 718.503 of the Florida Statutes furnished by the developer to the buyer or lessee. Pictures and photographs are solely for illustrative purposes and should not be relied upon when making a decision to purchase a home. Hardscape, landscape and other items shown may be decorator suggestions that are not included in the purchase price and availability may vary. Prices, features, elevations, floor plans and lot details are subject to change without notice.



CANARIAS

AT DOWNTOWN DORAL

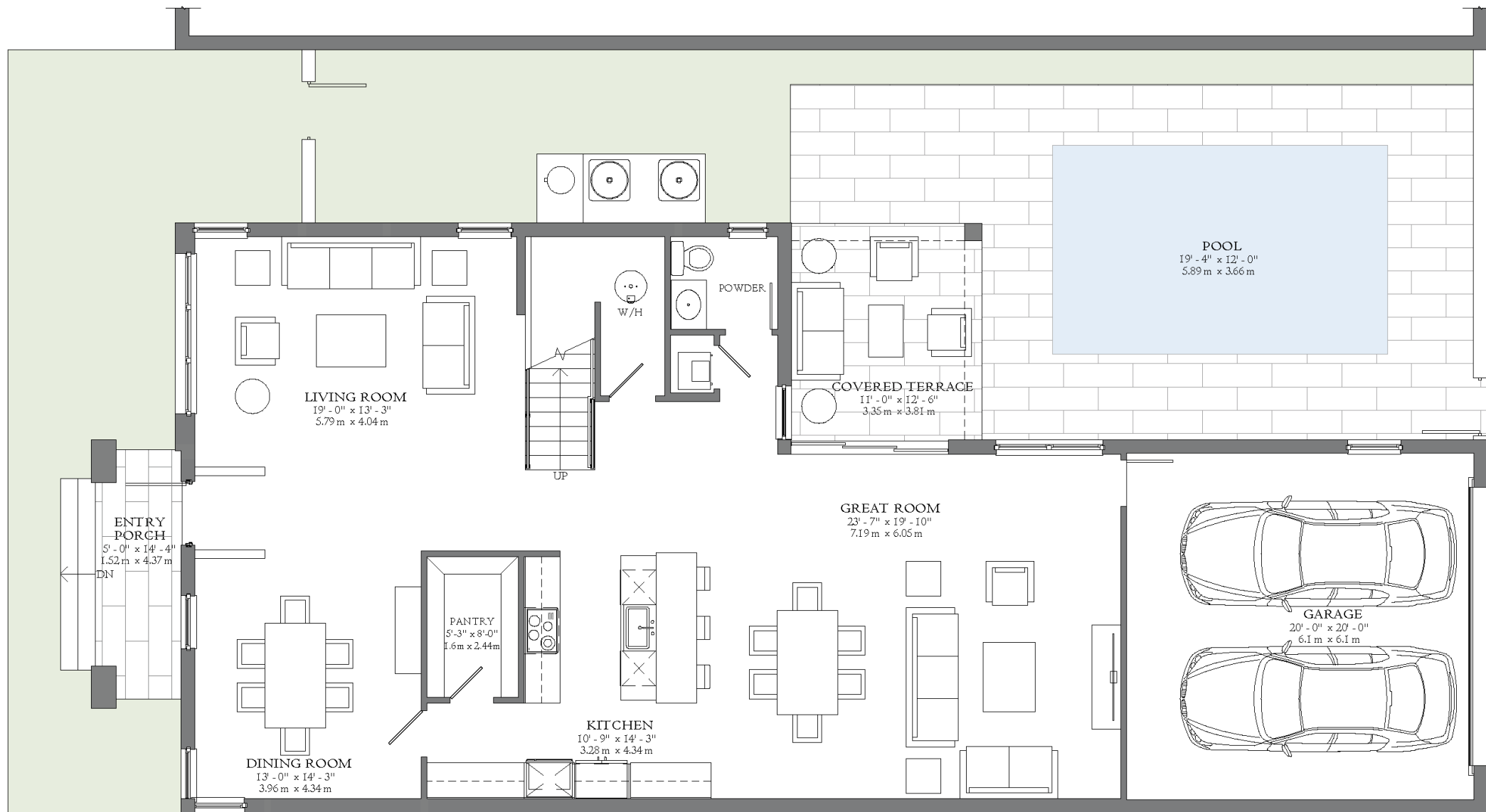
BALI

MODEL A

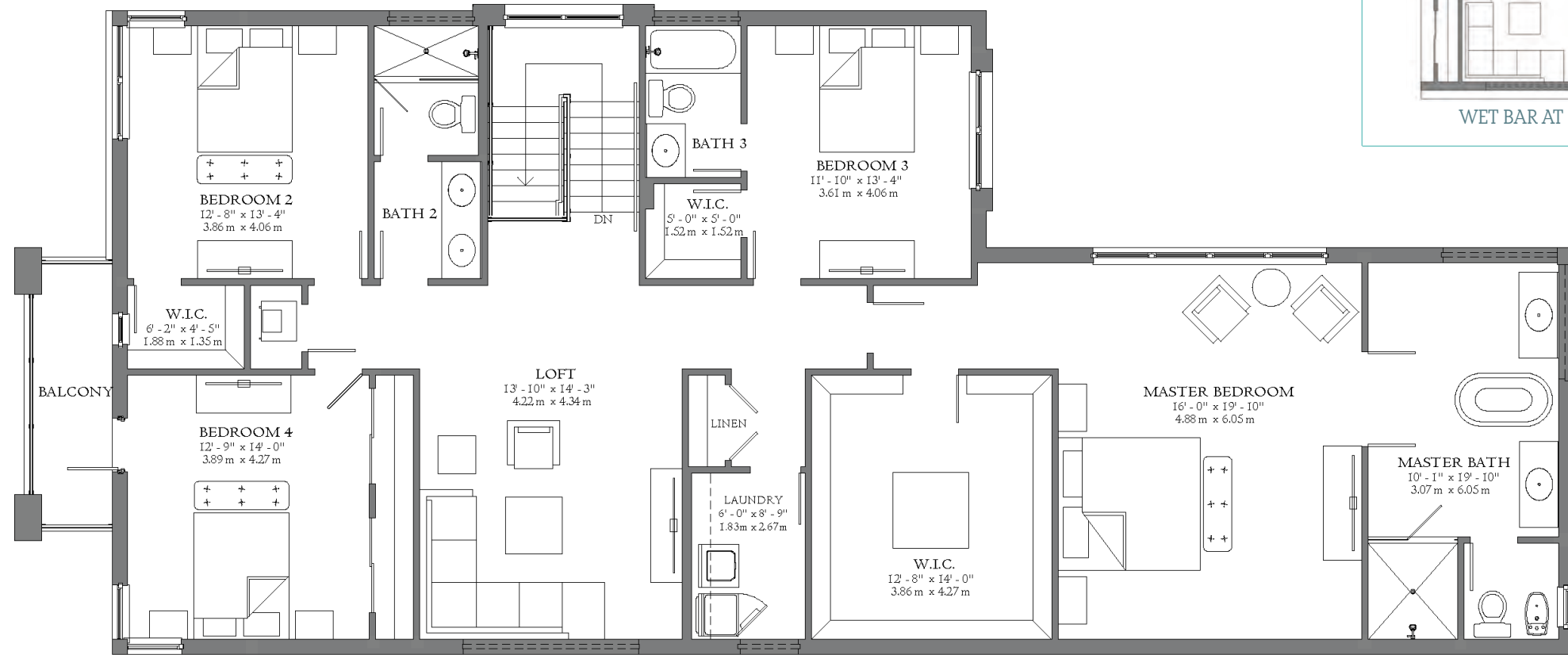
Two-Story
Single-Family Home
4 bedrooms, 3.5 bathrooms,
2-car garage at rear.

3,818 AC SF » 354.70 M²
4,536 TOTAL SF » 421.40 M²

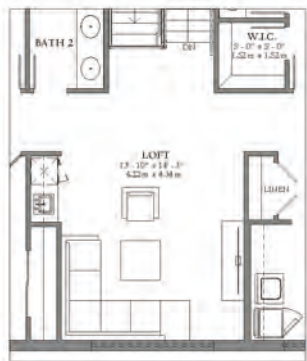
SEE ADDITIONAL OPTIONS



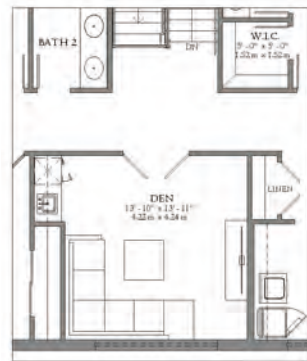
FIRST LEVEL
1,600 A/C SF » 148.64 M²



SECOND LEVEL
2,218 A/C SF » 206.06 M²



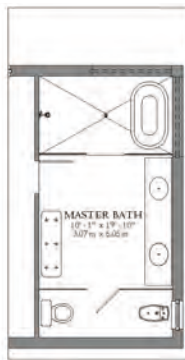
WET BAR AT LOFT



DEN W/ WET BAR IN LIEU OF LOFT

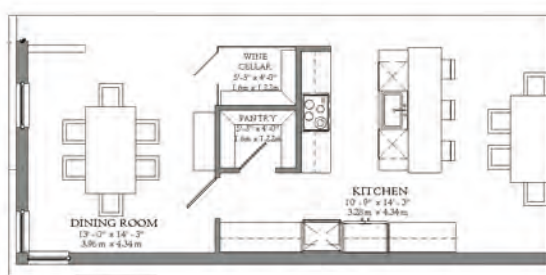


GLASS PARTITION AT TOILET ROOM IN LIEU OF WALL



ALTERNATE MASTER BATH

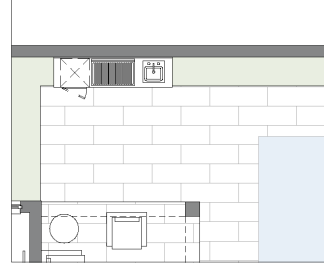
SECOND LEVEL OPTIONS



WINE CELLAR AT KITCHEN



ALTERNATE KITCHEN



SUMMER KITCHEN

FIRST LEVEL OPTIONS





BALI A | COASTAL - TWO-STORY



BALI A | CONTEMPORARY - TWO-STORY



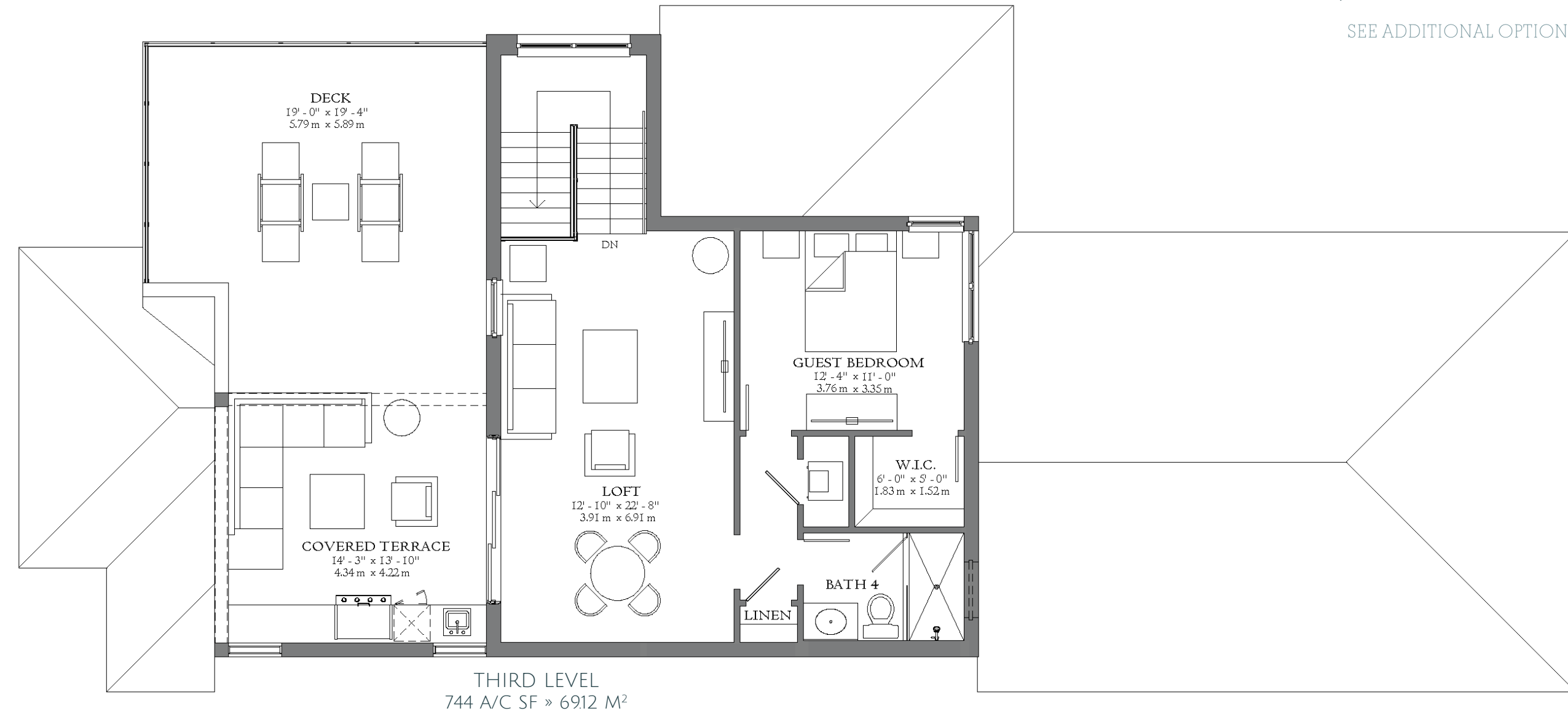
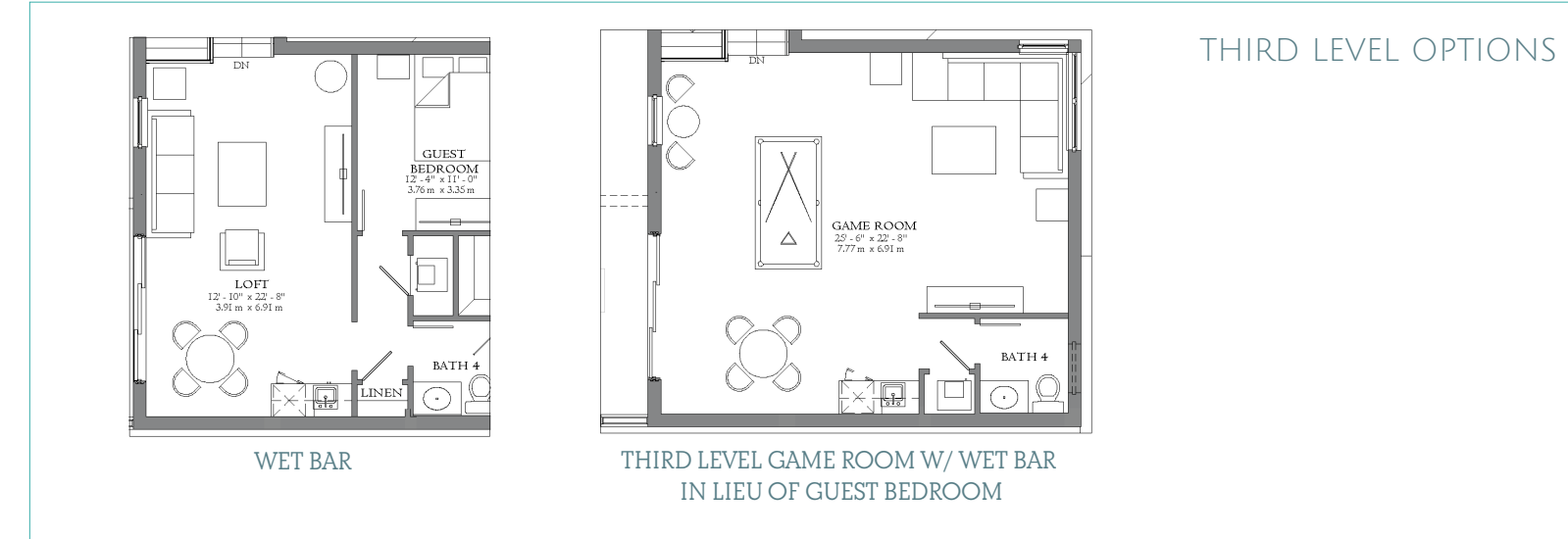
BALI A | SANTA BARBARA - TWO-STORY



BALI A | COASTAL - THREE-STORY



BALI A | CONTEMPORARY - THREE-STORY



BALI MODEL A

Three-Story
Single-Family Home
4 bedrooms, 3.5 bathrooms,
roof deck and covered terrace

4,562 AC SF » 423.82 M²
5,843 TOTAL SF » 542.82 M²

SEE ADDITIONAL OPTIONS

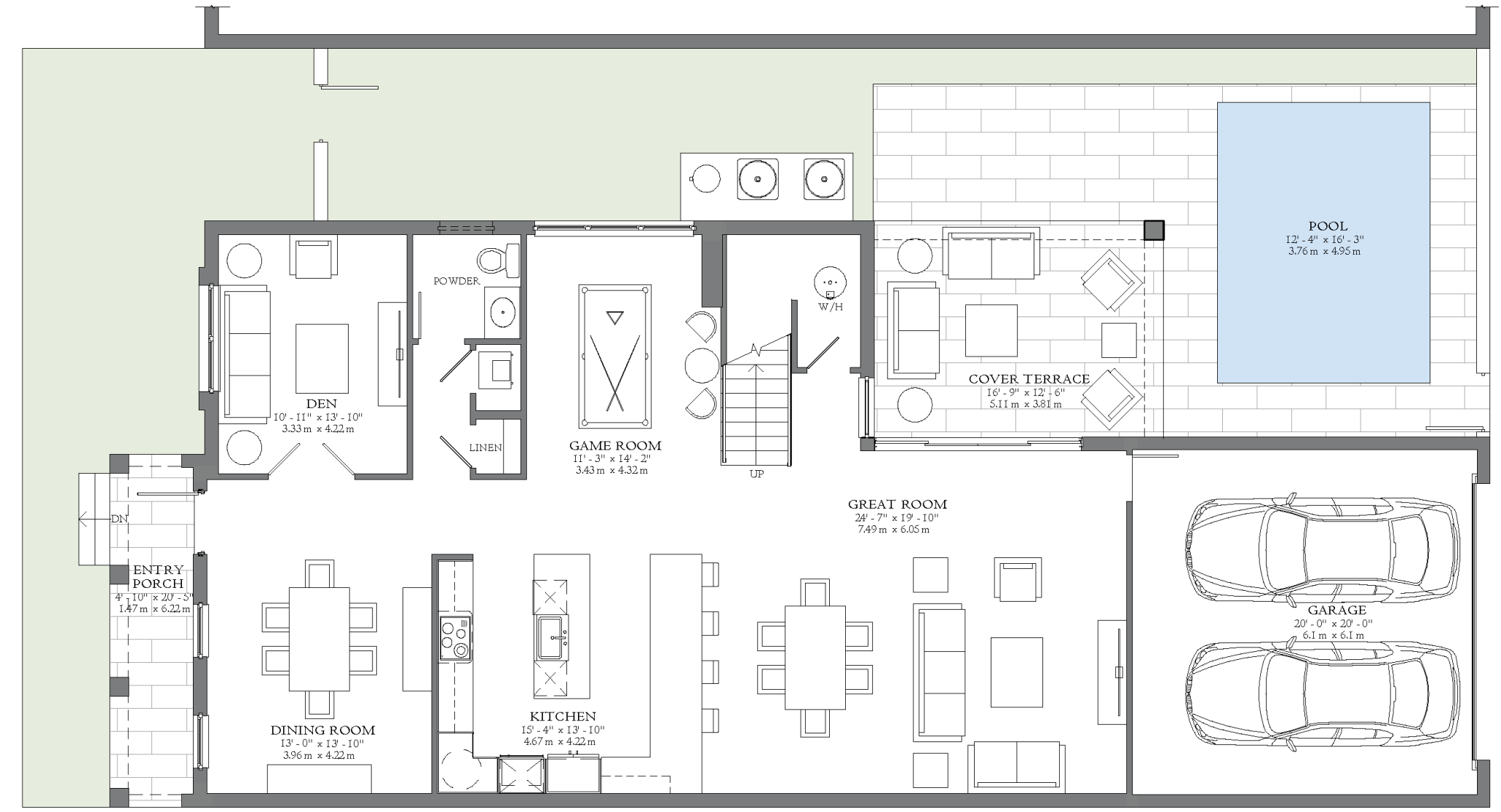
BALI

MODEL B

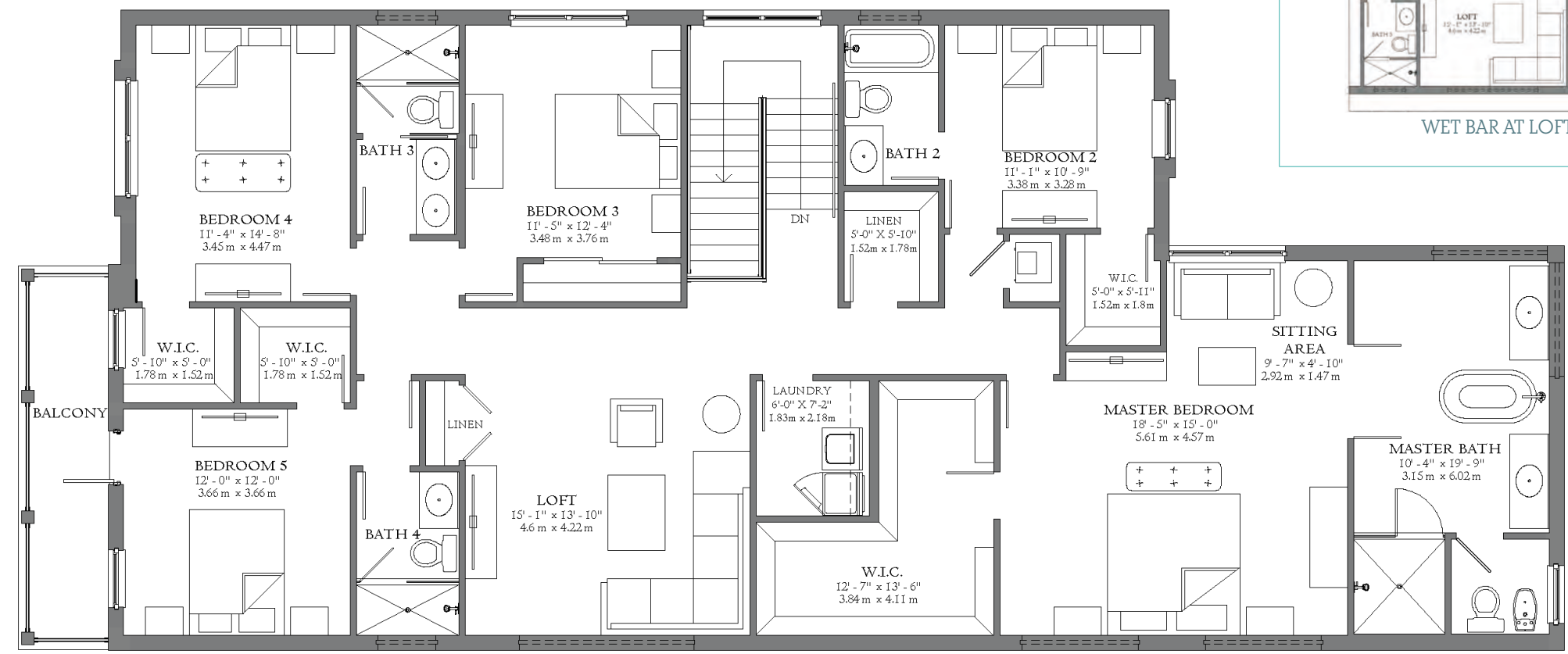
Two-Story
Single-Family Home
5 bedrooms, 4.5 bathrooms,
2-car garage at rear.

3,977 AC SF » 369.44 M²
4,811 TOTAL SF » 446.98 M²

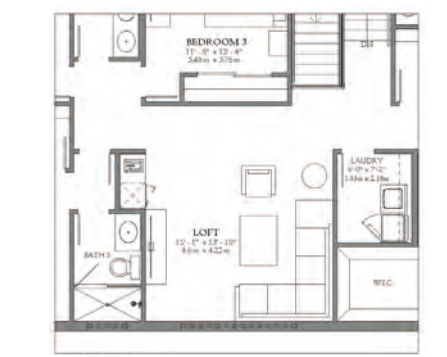
SEE ADDITIONAL OPTIONS



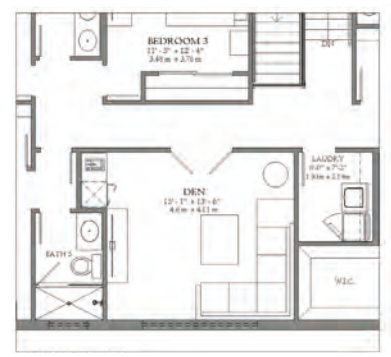
FIRST LEVEL
1642 A/C SF » 152.53 M²



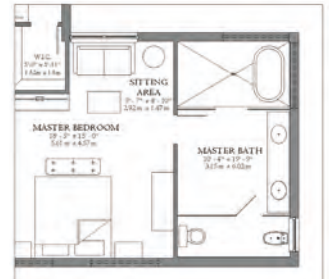
SECOND LEVEL
2335 A/C SF » 216.91 M²



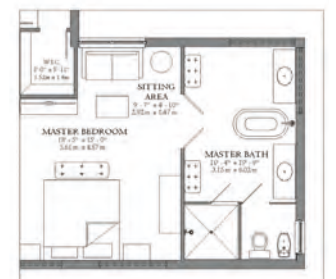
WET BAR AT LOFT



DEN IN LIEU OF LOFT

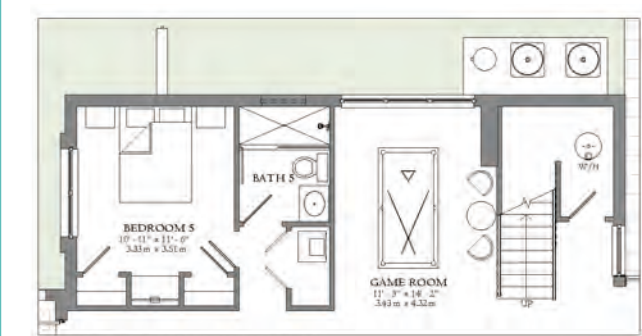


ALTERNATE MASTER BATH

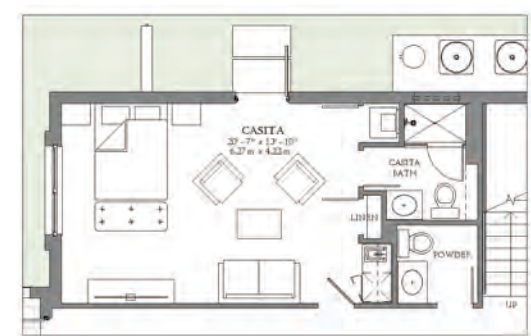


GLASS PARTITION AT TOILET
ROOM IN LIEU OF WALL

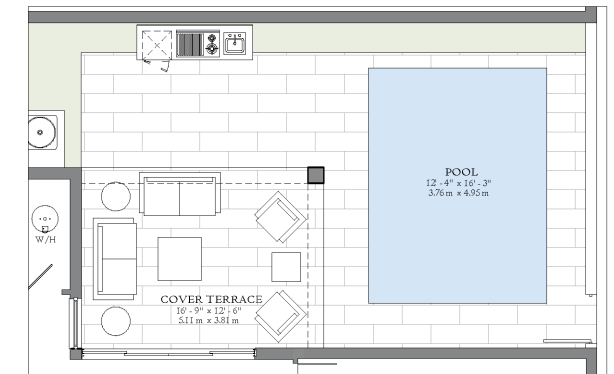
SECOND LEVEL OPTIONS



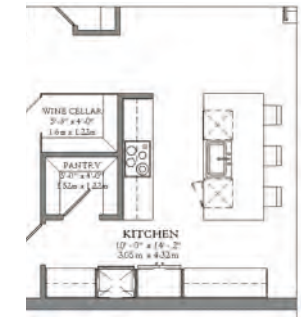
BEDROOM IN LIEU OF DEN



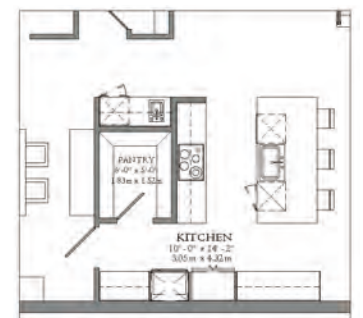
CASITA



SUMMER KITCHEN



ALTERNATE KITCHEN W/
WINE CELLAR



ALTERNATE KITCHEN W/
WET BAR

FIRST LEVEL OPTIONS





BALI B | COASTAL - TWO-STORY



BALI B | CONTEMPORARY - TWO-STORY



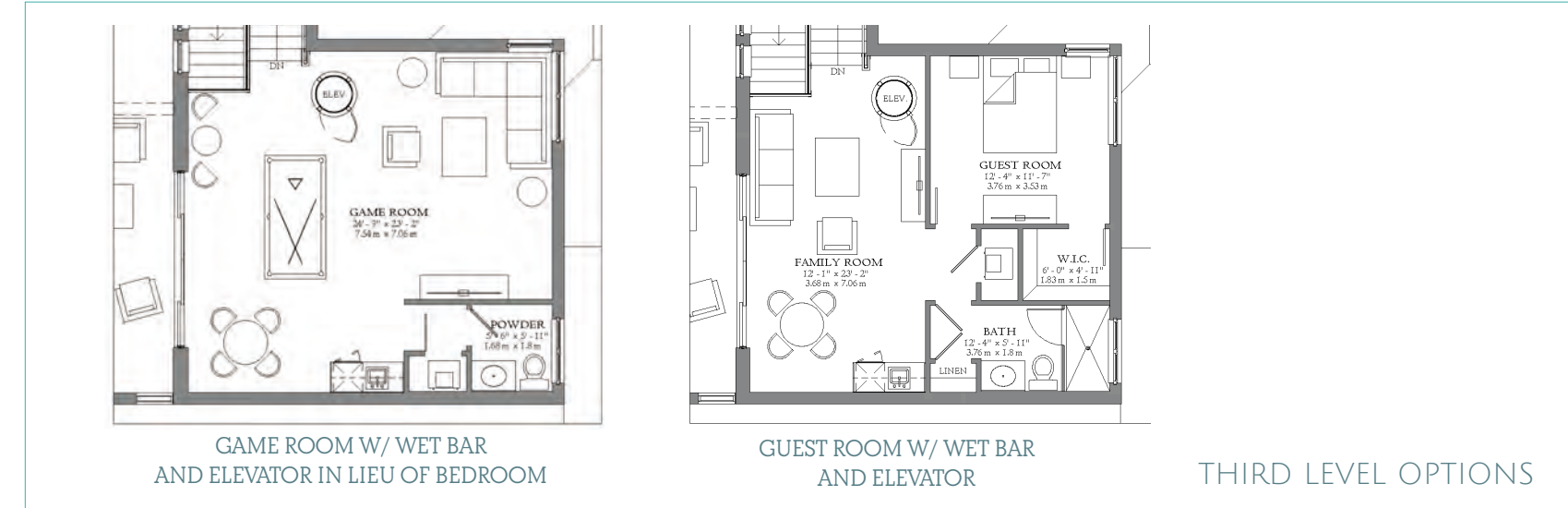
BALI B | SANTA BARBARA - TWO-STORY



BALI B | COASTAL - THREE-STORY



BALI B | CONTEMPORARY - THREE-STORY

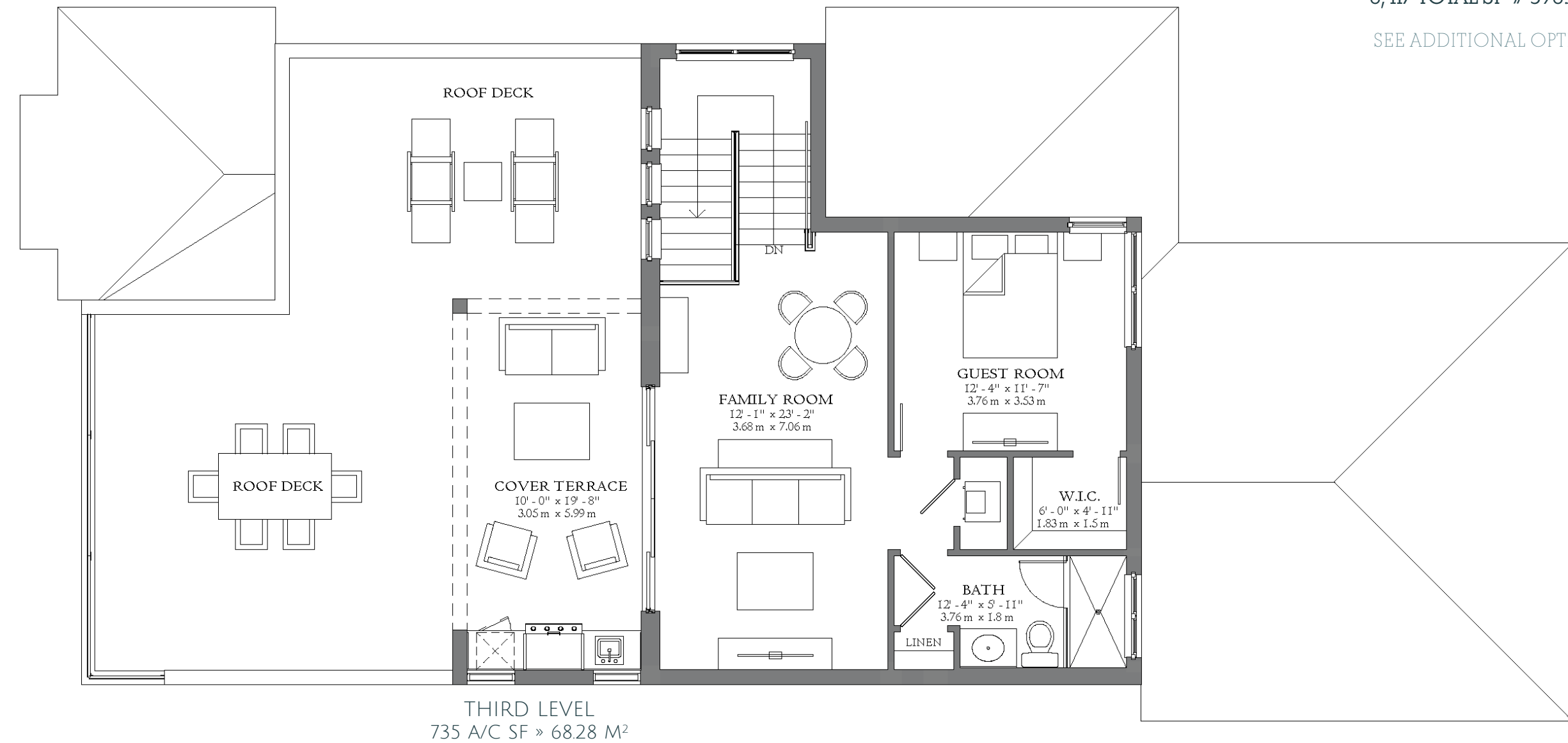


BALI MODEL B

Three-Story
Single-Family Home
6 bedrooms, 5.5 bathrooms,
roof deck and covered terrace

4,712 AC SF » 437.74 M²
6,417 TOTAL SF » 596.13 M²

SEE ADDITIONAL OPTIONS



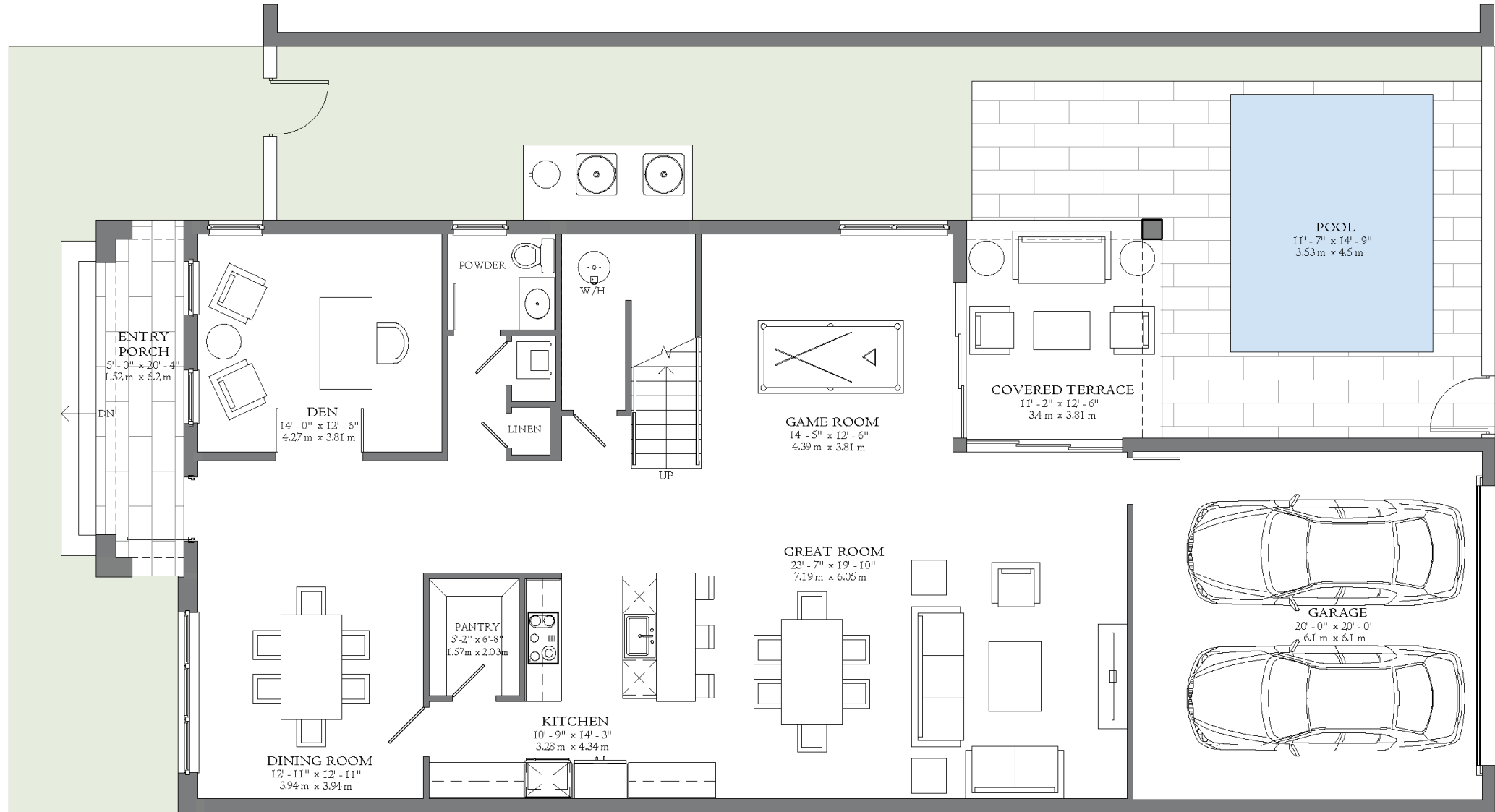
BALI

MODEL C

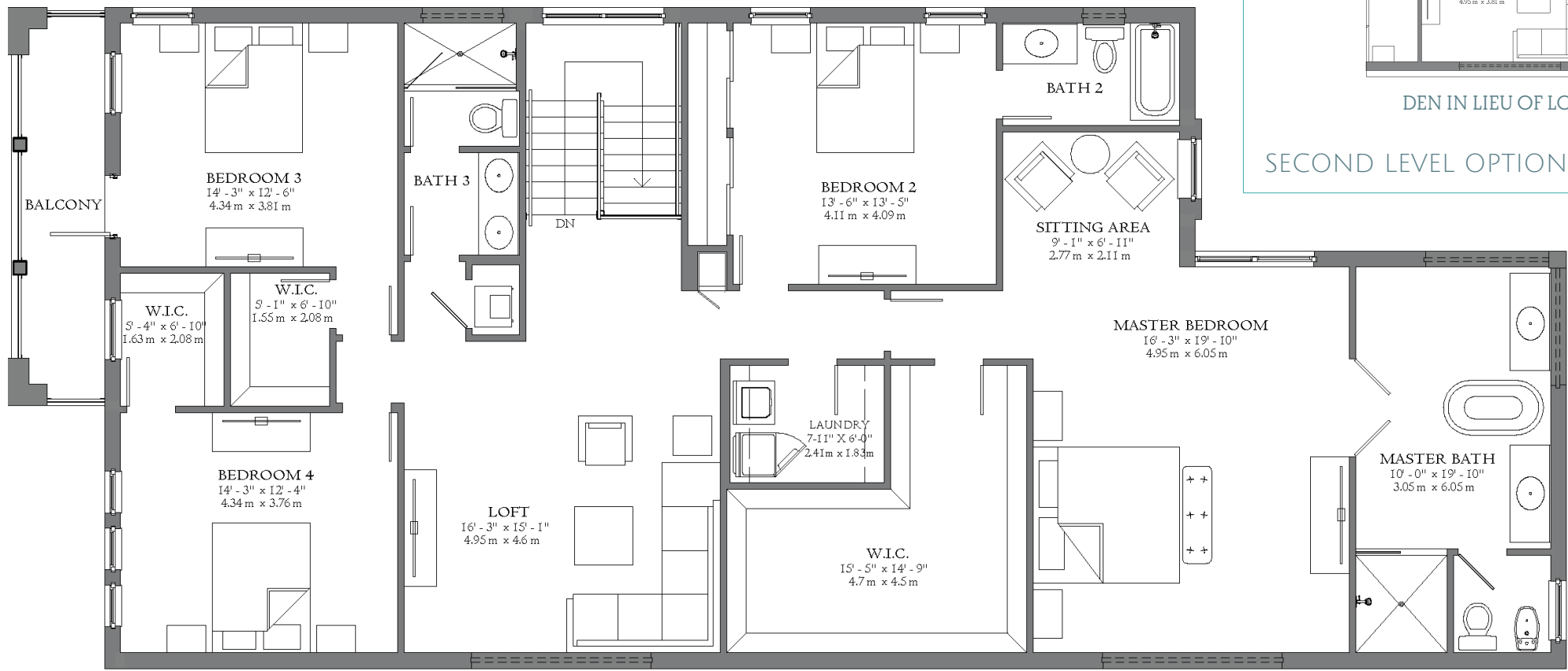
Two-Story
Single-Family Home
4 bedrooms, 3.5 bathrooms,
2-car garage at rear.

4,017 AC SF » 37318 M²
4,798 TOTAL SF » 445.74 M²

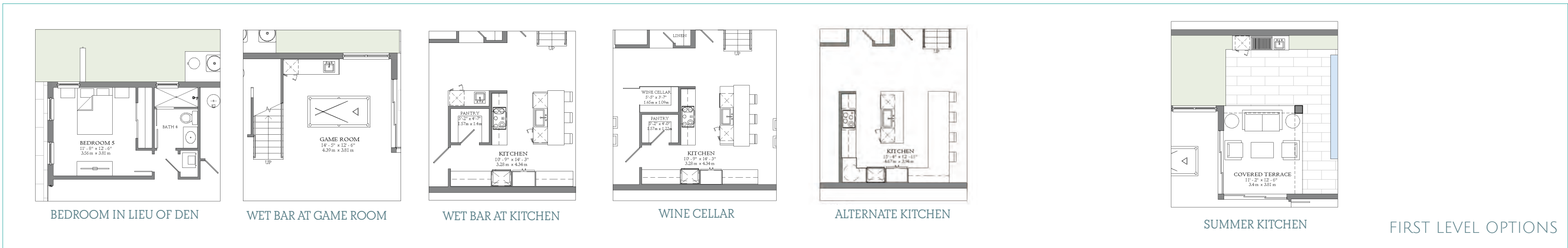
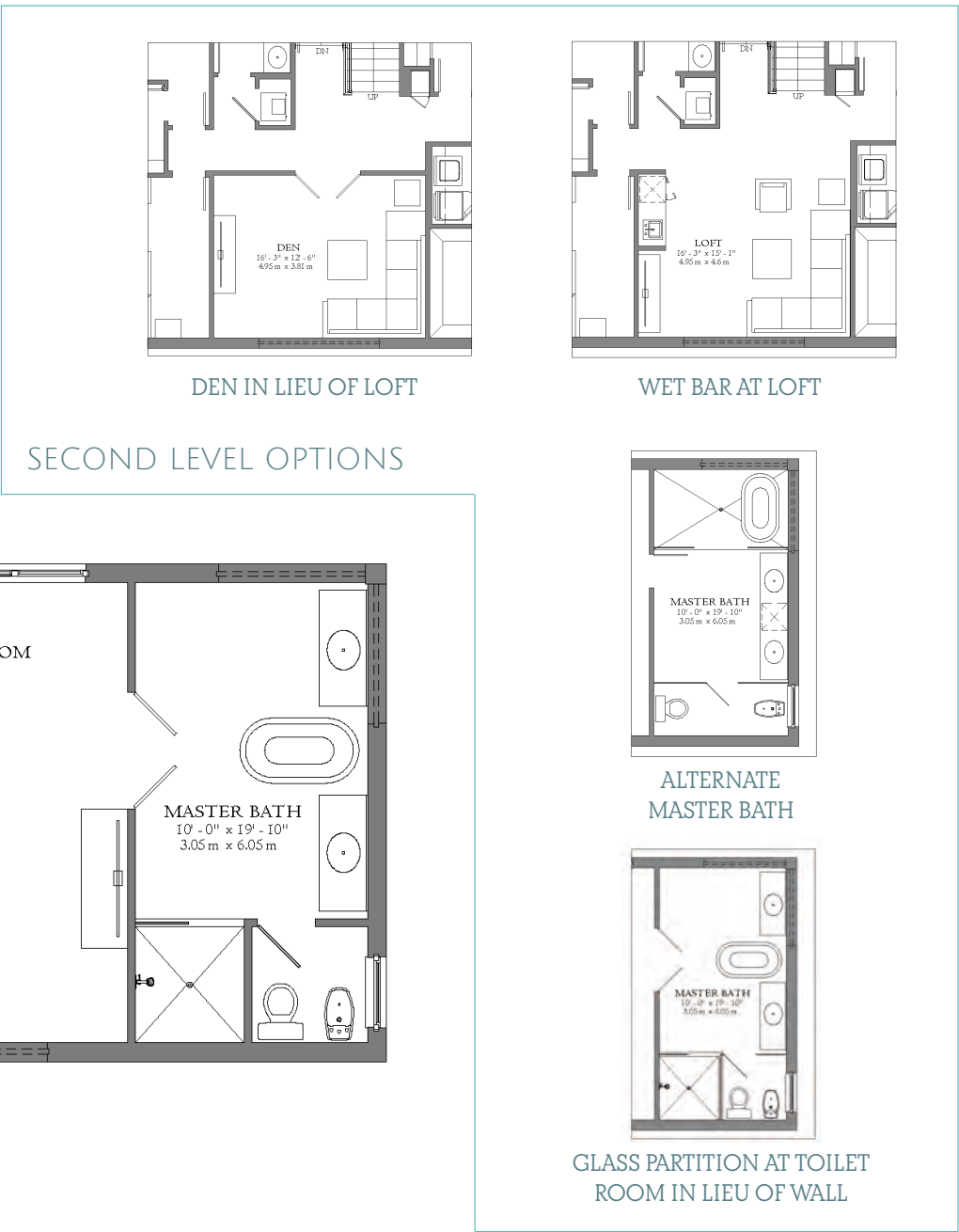
SEE ADDITIONAL OPTIONS



FIRST LEVEL
1,718 A/C SF » 159.60 M²



SECOND LEVEL
2,299 A/C SF » 213.58 M²





BALI C | COASTAL - TWO-STORY



BALI C | CONTEMPORARY - TWO-STORY



BALI C | SANTA BARBARA - TWO-STORY



BALI C | COASTAL - THREE-STORY



BALI C | CONTEMPORARY - THREE-STORY



BALI MODEL C

Three-Story
Single-Family Home
5 bedrooms, 4.5 bathrooms,
roof deck and covered terrace

4,826 AC SF » 448.34 M²
6,164 TOTAL SF » 572.64 M²

SEE ADDITIONAL OPTIONS

